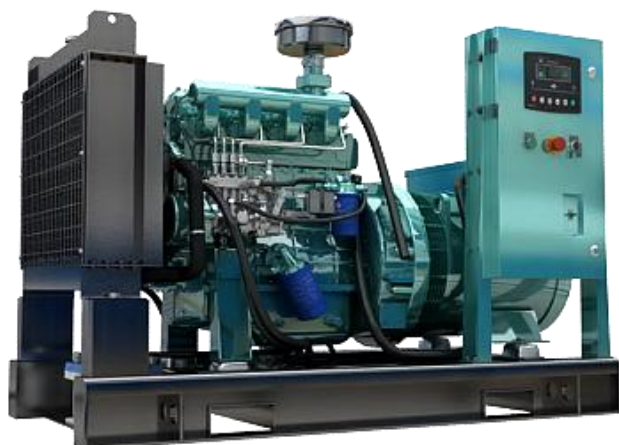


Land Based Genset- WPG22 Series



Gen-Set Specifications

Genset Model		WPG22	
Power Factor		0.8-3 phase, 1.0-single phase	
Frequency	Voltage	Prime	Standby
50Hz	400/230V	20kVA/16kW	22kVA/17.6kW
60Hz	440/254V	20kVA/16kW	22kVA/17.6kW
B- Series	Standard		≤102 dB (A)
F-Series	With base fuel tank (65 L)		≤102 dB (A)
L-Series	With base fuel tank and soundproof enclosure		≤75 dB (A) @7m

Standard Features

- ◆ Mechanical governor
- ◆ IP21/IP23
- ◆ Shutoff solenoid
- ◆ Starting batteries(maintenance-Free) with connective wires
- ◆ Forklift groove, shock absorber
- ◆ Color: green (B,F) / beige canopy and black chassis (L)
- ◆ Packaging: wooden packing case(B,F)/ simple packing case (L)
- ◆ DC12V Electric starter
- ◆ H type insulation
- ◆ Air filter, muffler
- ◆ Circuit Breaker
- ◆ Documents
- ◆ Closed water-cooled
- ◆ Deep-sea 6020
- ◆ Battery Charger
- ◆ Oil Drain Valve

Options

- ◆ Automatic Main Failure(AMF)
- ◆ External fuel tank(1000L/1500L)
- ◆ Automatic Transfer Switch(ATS)
- ◆ Spare Parts
- ◆ Paralleling System
- ◆ Engine Heater (water heater)

Engine Specifications

Engine Make & Model	Weichai WP2.5D22E2 (50HZ)	WP2.1D21E2 (60HZ)
Rated Speed	1500 rpm	1800rpm
Prime Power	22 kW	21 kW
Standby Power	24 kW	23 kW
Bore & Stroke	90x100 mm	85x92 mm
Displacement	2.5 L	2.1 L
Cylinder Number	4	
Fuel System	Mechanical Pump	
Governor Method	Mechanic	
Aspiration	Natural Aspiration	
Starting Method	12V electric starter and battery charging alternator	

Fuel system

Fuel filter type	Duplex fine filter				
Fuel consumption (l/hr)					
	Prime	110% Load	100% Load	75% Load	50% Load
	22 kW	/	6.05	4.26	3.50
	21 kW	/	5.88	4.57	3.12

Air intake system

Air filter type	Dry-type			
Combustion air flow (kg/h)	/ @ Prime	/ @ Prime	/ @ Standby	/ @ Standby
Max. combustion air intake restriction(kPa)	≤ 6.2			

Cooling system

Water Pump Type	Belt Driven, Centrifugal		
Coolant capacity of engine (L)	5		3.5
Radiator capacity (L)	8		8
Max. water temperature(°C)	95+3		

Lubrication system

Oil filter type	Spin-on full-flow		
Oil type	CD15W/40		
Oil pan capacity (L)	7.5		8.5
Oil cooling method	Water		
Max. oil pressure	540-750		

Exhaust system

Max. exhaust back pressure (kPa)	6		
Max. exhaust temperature (°C) / After turbocharger	/		/
Exhaust-gas mass flow (kg/h)	/ @ Prime	/ @ Prime	/ @ Standby
	/ @ Standby	/ @ Standby	

Alternator Specifications

Alternator Make	Stamford/Marathon/Xingnuo	
Alternator Model	PI144D/GM-16-4/XN184E	PI044H/ GM-16-4/XN164D
Bearing No	1	
Insulation Class	H	
Steady-State Volt Adjustable Rate	≤±2.5%	
IP class	IP23/ IP21/ IP21	
Alternator Winding	2/3	
Winding Way	12	
Excitation Mode	Brushless	
Rated Power Factor	0.8	

Control Module Specifications

The DSE6020 is an Auto Mains Failure Control Module

- ◆ Back-lit LCD display
- ◆ 3 Phase generator and 3 Phase Mains monitoring
- ◆ Monitoring speed, frequency, voltage, current, oil pressure, coolant temperature and fuel level
- ◆ Display warning, shutdown and engine status information
- ◆ Hours counter provides accurate information for monitoring and maintenance



Remarks

Prime Rating: These ratings are applicable for supplying continuous electrical power (at variable load) in the lieu of commercially purchased power. There is no limitation to the annual hours of operation and this model can supply 10% overload power for 1 hour in 12 hours.

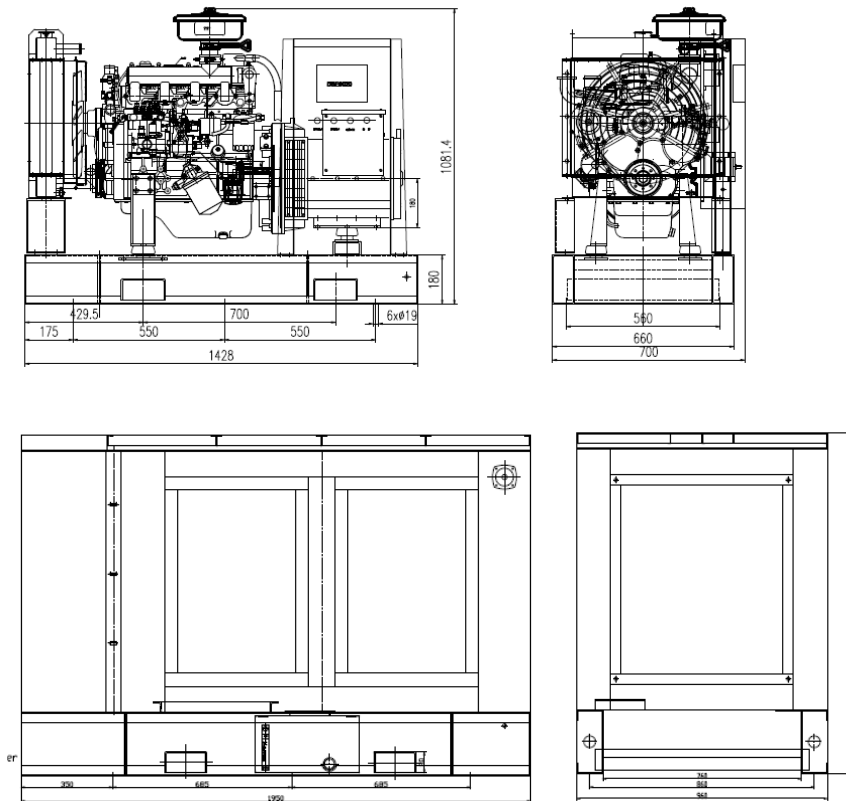
Standby Rating: These ratings are applicable for supplying continuous electrical power (at variable load) in the event of a utility power failure. No overload is permitted on these ratings. The alternator on this model is peak continuous tested (as defined in ISO 8528 - 3).

Standard Reference Conditions

Note: Standard reference conditions of 25°C(77°F) Air Inlet Temp, at 100m(328 ft) A.S.L. with 30% relative humidity. The fuel consumption data are at full load with diesel fuel with specific gravity of 0.85 and in compliance with to BS2869: 1998, Class A2.

Dimensions

	Length	Width	Height	Weight
B- Series	1430 mm	700 mm	1100 mm	482 kg
F-Series	1430 mm	700 mm	1100 mm	534 kg
L-Series	1950 mm	960 mm	1300 mm	690 kg



Sales Promises

Weichai Power provides a full line of brand new and high quality products. Each unit is strictly tested in the factory.

Warranty time: 1 year

Service and parts are available from Weichai Power or distributors in your location.

Distributed By:

Manufacturer: Weichai Power Co., Ltd
Address: 197 A, Fushou East Street, High-Tech
Development Zone, Weifang, China
www.weichai.com

