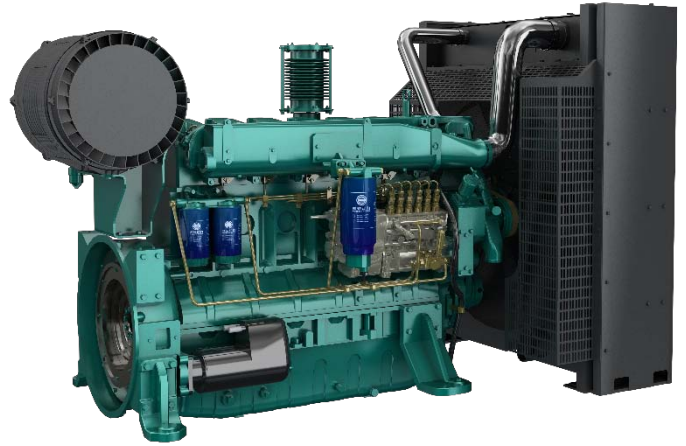


P-Drive Engine- WP12 Series

General Specifications

Bore & Stroke	126×155 mm
Displacement	11.596 L
Cylinder Number	6
Compression ratio	16:1
Fuel System	Mechanical Pump
Aspiration	TA



Model	Rated Power/Speed	Max Torque/Speed
	kW/r/min	N/m/r/min
WP12B288E200	288/1500	2005/1300

Model	Rated Power/Speed	Max Torque/Speed
	kW/r/min	N/m/r/min
WP12B288E201	288/1800	1778/1400
WP12B335E201	334.9/1800	2049/1500

Standard Equipment

Engine and block

- Cast iron frame style body structure
- One-piece forged crankshaft
- Aluminium alloy pistons with gallery oil cooling
- Separate cast iron cylinder heads and replaceable dry cylinder liners

Cooling system

- Radiator and hoses supplied separately
- Thermostatically-controlled system with poly belt driven coolant pump and pusher fan

Lubrication system

- Flat bottom large capacity oil pan (23 L)
- Spin-on full-flow lub oil filter
- High capacity gear driven lube oil pump

Fuel system

- P type fuel injection pump and injector for higher inject pressure
- Duplex fine filter and Water separated filter assembly with the transparent cup

Air intake and exhaust system

- Turbocharger; Shutoff solenoid mounted on the fuel pump
- Special rear mounted air filter with restriction indicator
- Silicone tubes and strong clips for pipe connecting
- Stainless steel exhaust manifold cover for heat isolating

Electrical system

- 24V electric starter motors and battery charging alternator

Flywheel and housing

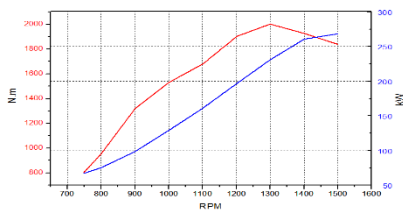
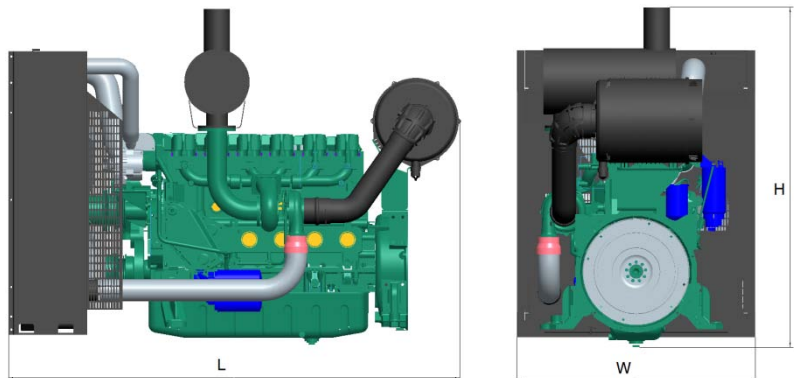
- SAE1 flywheel housing and 11.5/ 14" flywheel

Optional Equipment

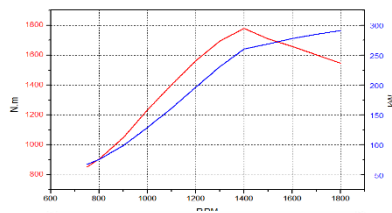
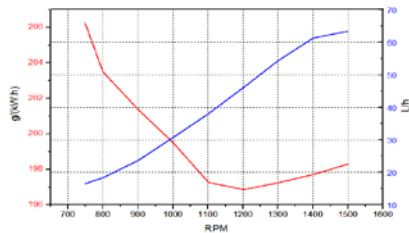
- Radiator for tropical environment (50°C)
- Immersion heater with thermostat
- Intake air heater for cold start aid
- Manual drawing off oil pump
- Tool Kits

Dimensions and Weight

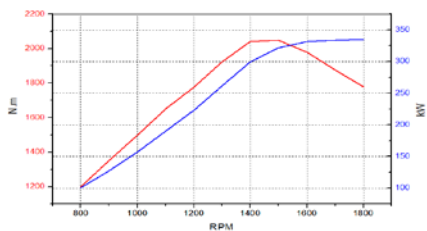
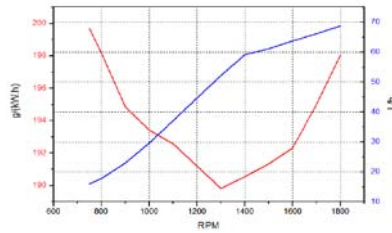
Length	2087 mm
Width	1080 mm
Height	1539 mm
Weight	1050 kg



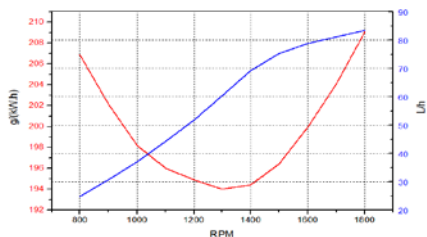
WP12B288E200



WP12B288E201



WP12B335E201



Power definition

Standard ISO 3046/1 -1995(F)

Reference conditions

Ambient temperature	25 °C
Barometric pressure	100 kPa
Relative humidity	30%

Fuel oil

Relative density	0.840± 0.005
Lower calorific power	42 700 kJ/kg
Consumption tolerances	± 5 %

Lube oil

Recommend grade	CF 15W/40
-----------------	-----------

Distributed By:

Manufacturer: Weichai Power Co., Ltd
 Address: 197 A, Fushou East Street, High-Tech
 Development Zone, Weifang, China
www.weichai.com

